



blairtummock housing association

NEWSLETTER

at the heart of our community

Winter 2017

Christmas Party & Pantomime at The Bridge

**Wednesday 20th December
2017 at 6pm**

The Association and FARE would like to invite you and other members of your household to attend a Christmas Party and then to enjoy the Christmas Pantomime Ricky McWhittington.

The party will start at 6.00pm with some party games, a visit from Santa Claus and fun for the family before the show at 7.00pm.

If you would like to attend please come into the office at 45 Boyndie Street, G34 9JL to complete a request form or alternatively telephone 0141 773 0202. All ticket requests must be received by Friday 15th December to ensure enough time to distribute the tickets.

Tickets will be allocated on a first come, first served basis and solely at the discretion of the Association for members of your household only. A separate list will be held for anyone requesting additional tickets (e.g. grandchildren) and you will be contacted after the 15th December to confirm whether or not there is availability.

it's
panto
time

The office will close at 1pm on Friday the 22nd December and re-open at 9am on Thursday the 4th January 2018. Should you have an emergency repair during this time you should contact our Out of Hours Service on 0141 771 9600. Please note this service is for emergency repairs only.

*The Committee and Staff would like to
wish you a Merry Christmas and
a Happy New Year!*

WARM HOME DISCOUNT SCHEME



*Are you
due £140?*

What is the Warm Home Discount Scheme?

You could receive £140 payment towards your electricity costs for 2017/18. The money is paid directly to your bill or meter if you qualify.

Eligibility

There are 2 ways to qualify for the Warm Home Discount Scheme:

- you get the Guarantee Credit element of Pension Credit - known as the 'core group'
- you're on a low income and meet your energy supplier's criteria for the scheme - known as the 'broader group'

How you apply for the Warm Home Discount Scheme depends on how you qualify for the discount.

Pre-pay or Pay-as-you-go Meters

You can still qualify for the discount if you use a pre-pay or pay-as-you-go electricity meter.

Your electricity supplier can tell you how you'll get the discount if you're eligible, for example a voucher you can use to top up your meter.

How do I Apply?

Contact the Warm Home Discount Team on
0345 603 9439.

Katie from People's Gateway can also assist you in applying. Please contact us on 773 0202 if you wish to arrange to see Katie in our office.

Right to Repair

Tenants are reminded that the Association is committed to the Right to Repair legislation for small or urgent repairs and compensation to tenants when we don't complete the repair in the timescale laid down by the law. Any tenant wishing further details on the Right to Repair should contact the Association's Maintenance staff for details.

Community Noticeboard

Remember if you wish to display anything on the noticeboard which is within the Association grounds please speak to the reception staff, we are happy to display information regarding local clubs / groups / events.

Festive Arrangements

Glasgow City Council Cleansing

Bulk Uplift

There will be no bulk uplift on Thursday 28th December 2017.

Bins

If your collection is normally a Thursday / Friday or Sunday, your bin will be emptied as normal.

PLEASE DISPOSE OF ITEMS RESPONSIBLY, RECYCLE WRAPPING PAPER AND BOXES WHERE POSSIBLE TO ALLOW SPACE FOR HOUSEHOLD RUBBISH WITHIN BINS.

Home Energy Scotland



Home Energy Scotland is a Scottish Government Programme which provides free advice on energy saving, you can get in touch with them for free by calling an advisor on 0808 808 2282, or email adviceteam@sc.homeenergyscotland.org and an advisor will call you back. Advisors are available Monday to Friday from 8am to 8pm, and on Saturday from 9am to 5pm.

They can help you save energy and money and make your home warmer. They can also do a free Home Energy Check over the phone and pin-point where you can save energy and money.

Tenants Living with District Heating



How to change the batteries on the room stat for tenants with the district heating:

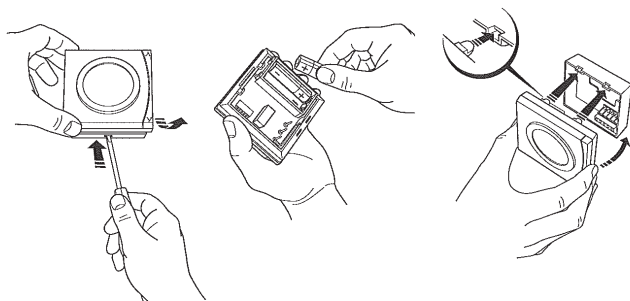
- When a battery sign is indicated on the LCD panel.
- Open the flap on the stat.
- Then flick off the removable cover to reveal the AA batteries.
- Change with new recommended Duracell batteries.
- Re-fit cover and close flap.

Worcester Boilers & Danfoss Room Stats

For all tenants with new Worcester boilers and Danfoss room stats. When battery indicator is shown follow the instructions below on how to replace the batteries on their room stats.

Low Battery Indications

For battery powered thermostat (RET2000B-RF) when the batteries require replacement the battery low symbol will flash. Batteries should be replaced within 15 days, after which the thermostat will turn off the load it is controlling.



Rent Increase 2018

You will shortly receive some information from the Association on our proposals for the rent increase for 2018-2019. By law, we are required to consult with you on the proposals.

When considering the rent increase the Management Committee will look at a variety of issues including, the running costs of the Association, future replacement costs for bathrooms, kitchens, windows etc. and loan charges which is the money the Association borrowed to build / refurbish properties. We want to ensure that rents are maintained at affordable levels but that we can cover our costs and continue to provide services.

Your views are very important to us and we look forward to hearing them, watch out for our Rent Consultation Questionnaire which will be sent to you over the next few weeks.

Affordable Warmth Dividend - Are You Due £100?

What is the Affordable Warmth Dividend?

The Affordable Warmth Dividend is a £100 payment made by the Council to Glasgow residents who are 80 years of age and older on or before 31st March 2018 to keep warm during winter.

Who can apply for the dividend?

To receive the payment, you must be 80 years of age or over by 31st March 2018 and living in Glasgow. If you will be 80 years of age before 31st March 2018 you can make the application now.

How long will the scheme be available?

Applications will be accepted from 1st November 2017 until 31st March 2018.

How can I make an application?

Application forms are available on the Council's website at www.glasgow.gov.uk/affordablewarmth or from your local Revenues and Benefits Centre or by telephoning 0141 287 7961.

Useful Contact Numbers

Police – Emergency
999

Police Scotland
101

Crimestoppers
0800 555 111

Out of Hours Emergency Repairs
0141 771 9600

Bulk Uplift
0141 287 9700

Dog Fouling
0300 343 7027

Graffiti Removal
0300 343 7027

Pest Control
0141 287 1059

Abandoned Cars
0141 276 0859

Roads or Lighting Faults
0800 373 635

12 Days of Christmas

1 JUICE	2 TINS OF CUSTARD	3 TINS OF VEGETABLES INC POTATOES	4 TINS OF SOUP
5 TINNED HAM, CHICKEN OR TURKEY	6 NIBBLES/ CHOCOLATE TREATS	7 GRAVY GRANULES	8 CONDIMENTS
9 MINCE PIES/ CHRISTMAS CAKE	10 CHRISTMAS BISCUITS	11 NAPKINS	12 TABLE DECORATIONS

**The most welcomed gifts
you'll give this Christmas**

*All pre-prepared parcels gratefully received
NO LATER than 5pm on Wednesday 13th December
at the Blairtummock Housing Association's Office.*


**Glasgow NE
foodbank**
IN PARTNERSHIP WITH
CELTIC FC FOUNDATION
CALTON PARKHEAD CHURCH OF SCOTLAND

Glasgow North East Foodbank is a registered SCIO No. SC045255
Calton Parkhead Parish Church of Scotland is a charity registered in Scotland No. SC006958
Celtic FC Foundation is a registered SCIO No. SC024648

Christmas Word Search

K B A N G E L B Q E F R E C N A D Y J P
C R V D U T O L D O N K E Y E F A E G R
G L I T T E R I L T K T R E E C S T H E
G V X S T A R T P E F U R Y I M H A O S
O L E S K O O Z N L T R I F L E E L R E
M L N J G R H E V T R K B B Y R R O E N
B Z T M I S I N E S O E O E M R T C I T
Y A D I L O H N W I A Y F L F Y F O N S
N A T I V I T Y G M P O D O F O J H D C
I A M W O N R D N L I L E P B Y B C E H
D O N N E R U E I V E C A H O R F F E R
P M J O E C D F K E S A N T A A V Y R I
I L E L L R O A C F W S P R Y M D P J S
L E S T F E L M O D P D L O G A A R W T
A A U I Z Q P I T I T A N N E N B A U M
T D S A V E H L S P A R K L E G W N Z A
E O H O L L Y Y X U U I T R Z E E C E S
M I R A C L E G R C A R O L S R R E R H
O D B B E T H L E H E M H Y R R U R C S
C S S N O W F L A K E R O M H P E S O J

Did you know?
Donner means "Thunder" and Blitzen
means "Lightning" in German?

Kris Kringle	Vixen	Jesus
Mistletoe	Comet	Donkey
Pies	Cupid	Mary
Tannenbaum	Donner	Joseph
Christmas	Blitzen	Star
Turkey	Rudolph	Gold
Trifle	Family	Mhyrr
Holly	Reindeer	Chocolate
Elf	Tree	Sparkle
North Pole	Stocking	Glitter
Carols	Santa	Merry
Snowflake	Nativity	Holiday
Dasher	Bethlehem	Miracle
Dancer	Manger	Presents
Prancer	Angel	

Name:

Address:

Age:

All word searches we receive by Wednesday 10th January 2018 will be entered into a prize draw and where one lucky reader will receive a gift. Age Restriction 0 - 16 years.

Blocked Drains

Blocked drains are becoming an increasing problem in the area and this is due to residents flushing items such as wipes, cleaning cloths and nappies down toilets. Please read the advice from Scottish Water and refrain from flushing anything which is not pee, poo or paper. It is expensive for the Association to use specialist drainage companies and your rent money could be better spent!

Wipe Out Blocked Drains

The waste water drain which runs from your house to the public sewer is usually about 4 inches wide, which is less than the diameter of a DVD.

Flushing things like wipes, nappies or cotton buds down the toilet can cause drains to block, flooding you and your neighbours. It's easy in the bathroom just follow our Three P's rule and only flush pee, poo and toilet paper. Everything else should go in the bin, not down your toilet - check out the bathroom checklist of 'never flush' items below:

1. all wipes (baby, personal cleansing, toilet and household cleaning) - even if the pack says 'flushable'
2. sanitary items (sanitary towels, tampons, liners, applicators and backing strips;
3. cotton wool, cotton buds, disposable nappies and nappy liners
4. condoms, incontinence pads, colostomy bags, used bandages and contact lenses.

Wipe out blocked drains.

Help the cycle - put all wipes, sanitary items and other bathroom waste in the bin, not down the toilet.



Always working so the cycle never stops.
www.scottishwater.co.uk/cycle
SW CycleUP BB1 0913



Have You Thought About Becoming a Committee Member?

Some of the benefits for you are:

Gain confidence, build a sense of achievement, improve self-esteem and have a new sense of purpose.

Develop your understanding, skills and knowledge, add to your CV, and potentially open new career paths.

Meet new people, develop friendships, and socialise with others with a shared commitment.

Attend social & networking events, as well as training courses, to build up your skills.

Get personal satisfaction from giving something back to the local community whilst making a real difference.

Benefits for the association and the wider community include:

You'll help to raise awareness of the Association's work both within the local community and beyond.

The time and energy you commit to the Association will directly contribute to its work in improving the quality of life for tenants and the wider community.

You can help to ensure good quality housing and services.

If you want further information about serving on the committee or an informal chat please contact Jacqui O'Rourke at the Association's office.

EHRA Supports Glasgow NE foodbank

EHRA members (the eight community based housing associations and co-operatives that operate in Greater Easterhouse) have been working collectively to support Glasgow NE Foodbank by donating the money collected from the raffle at the annual quiz night of EHRA members and by holding food collections within their offices. The EHRA annual quiz was won by Gardeen Housing Association.

Here is Colin Cameron, Chair of EHRA presenting the cheque to Alex Howie of Glasgow NE Foodbank.

The Foodbank provide food parcels at Blairtummock Community Hall (next to the Association's office) every Thursday from 2pm-4pm. Foodbank vouchers are available from the Association's office and are then exchanged for three days of nutritionally balanced food. Please contact the Association's office for further information.



Policy Consultation

Allocations Policy | Repairs & Maintenance Policy

Please note the above policies have been reviewed and are available for tenants to comment on before final approval in April 2018. Contact John King, Housing Services Manager with any points of view or comments they wish to be considered.

[illegible]